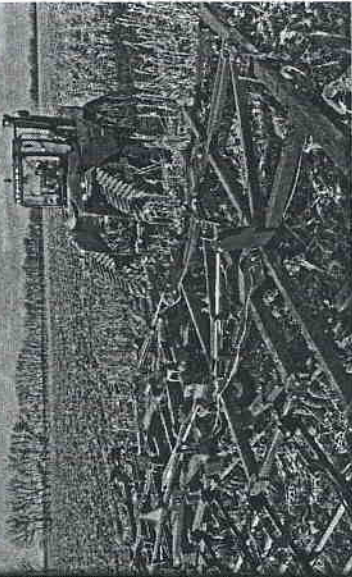
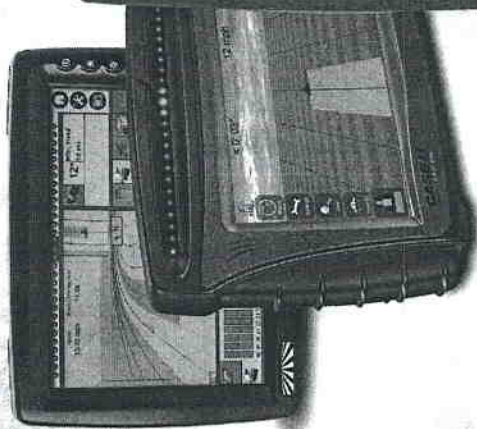
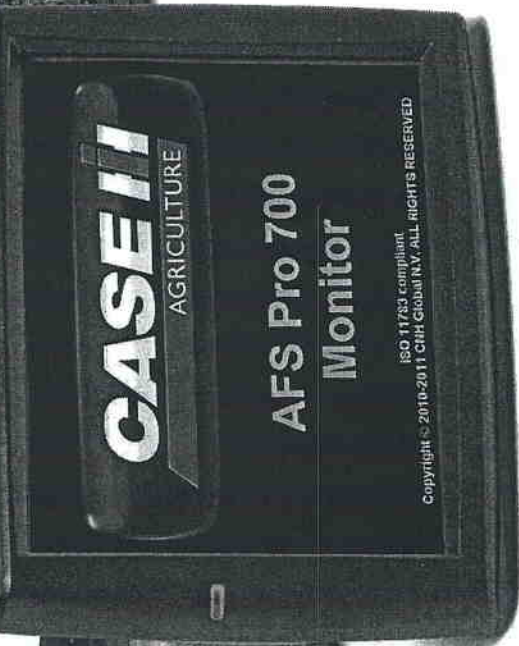


CUSTOMIZABLE OBSERVATION SYSTEMS



Voyager cameras
are now compatible with the
AFS® PRO 700 MONITOR!



CNH
ORIGINAL
PARTS

DESIGNED AROUND THE WAY YOU WORK

Let's face it, when it comes to work, we all have a different way of getting the job done. Some of us focus on the details. Others prefer to see the big picture. We get that. And that's why we created Voyager to be customizable. You build the system that will give you the functionality you need. And building your system is as easy as 1-2-3.

STEP 1

CHOOSE YOUR ADAPTER CABLES

NEW!

AFS® PRO 300/AFS® PRO 700* MONITOR ADAPTER CABLE†

Part No. ZAE31200043

- Camera adapter cable for the AFS Pro 300 and AFS Pro 700 monitors
- Works with any Voyager camera
- Allows for up to 3 camera inputs



FM-750™/FM-1000™ MONITOR ADAPTER CABLE†

Part No. ZAE31100083HD

- Camera adapter cable for FM-750 or FM-1000 monitor
- Works with any Voyager camera



* AFS Pro 300 and AFS Pro 700 displays are 3-camera capable.

† If reverse image is required you must use Part No. ZAEVCCS150B camera.

STEP 2

CHOOSE YOUR EXTENSION CABLES

25' VOYAGER EXTENSION CABLE

Part No. ZAECEC25HD

- Locking connectors
- Fully weatherproof connectors on both ends allows multiple "daisy chain" connections up to 200 ft. max.
- Camera cable is impervious to chemicals, oils, gasoline, salt, etc.



75' CAMERA EXTENSION CABLE

Part No. ZAECEC75

- 75' Cable can be daisy chained together
- Non-corrosive locking connectors with 4-pin round plug



STEP 3

CHOOSE YOUR HD BULKHEAD CONNECTOR CABLE (optional)

3-CAMERA INSTALLATION KIT

Part No. ZAEVOSIMK1THD

Recommended for tractor implement applications.

- Harnesses containing the heavy-duty bulkhead connection are recommended for applications that require a frequent connect/disconnect (e.g. tractor to implement application).
- Designed to allow you to quickly and easily connect and disconnect up to 3 cameras from an implement to the monitor in a tractor cab.



INSTALLATION KIT INCLUDES:

Part No.	Description	Qty.
ZAEBIC12L3HD	Bulkhead implement cable, 12', 3-camera capable	1
ZAECEC25L3HD	Camera extension cable, 25', 3-camera capable	2
ZAEUCMINTHD	Universal camera mount	2

NOTE: Use with bulkhead tractor cables (Part No. ZAEBTC25L3HD or Part No. ZAEBTC12L3HD) not included in the installation kit.

INDIVIDUAL HARNESS COMPONENTS

Don't need the entire kit? No problem. Individual components can be purchased separately.

Part No.	Description
ZAEBTC12L3HD	Bulkhead tractor cable, 12', 3-camera capable
ZAEBTC25L3HD	Bulkhead tractor cable, 25', 3-camera capable
ZAEBIC12L3HD	Bulkhead implement cable, 12', 3-camera capable
ZAECEC25L3HD	Camera extension cable, 25', 3-camera capable
ZAEUCMINTHD	Universal camera mount

STEP 4

CHOOSE YOUR CAMERA

NEW!

SUPER CMOS CYLINDER COLOR OBSERVATION CAMERA

Part No. ZAEVCMSYL36i

This waterproof (IPX7 rating) 12-volt camera offers a 131° viewing angle, reversed image orientation, an electronic iris and IR LED low-light enhancement (0 Lux with IR LED on).

- Rugged machined aluminum body
- 1.25" w × 1.25" h × 1.5" d



VOYAGER CCD COLOR CYLINDRICAL CAMERA

Part No. ZAE87367060HD

This 12-volt camera is waterproof (IPX7 rating) and offers a 130° viewing angle, reversed image orientation and an electronic iris.

- Rugged machined aluminum body
- Excellent low-light and high-bright environment performance
- 1.2" w × 1.2" h × 2.2" d



VOYAGER CCD COLOR CAMERA

Part No. ZAEVCCS150BHD

This 12-volt camera is waterproof (IPX7 rating) and offers a 150° viewing angle, electronic iris and IR LED low-light enhancement (0 Lux with IR LED on).

- Built-in microphone
- Normal/mirror image switch
- 2.7" w × 1.7" h × 5" d



STEP 5 CHOOSE ALTERNATE CAMERA MOUNTING PACKAGE (optional)



UNIVERSAL CAMERA MOUNT

Part No. ZAEUCMNTHD

Allows mounting of the ZAEVCCS150BHD camera to a round railing or a flat surface and be able to turn and adjust the camera to virtually any angle.



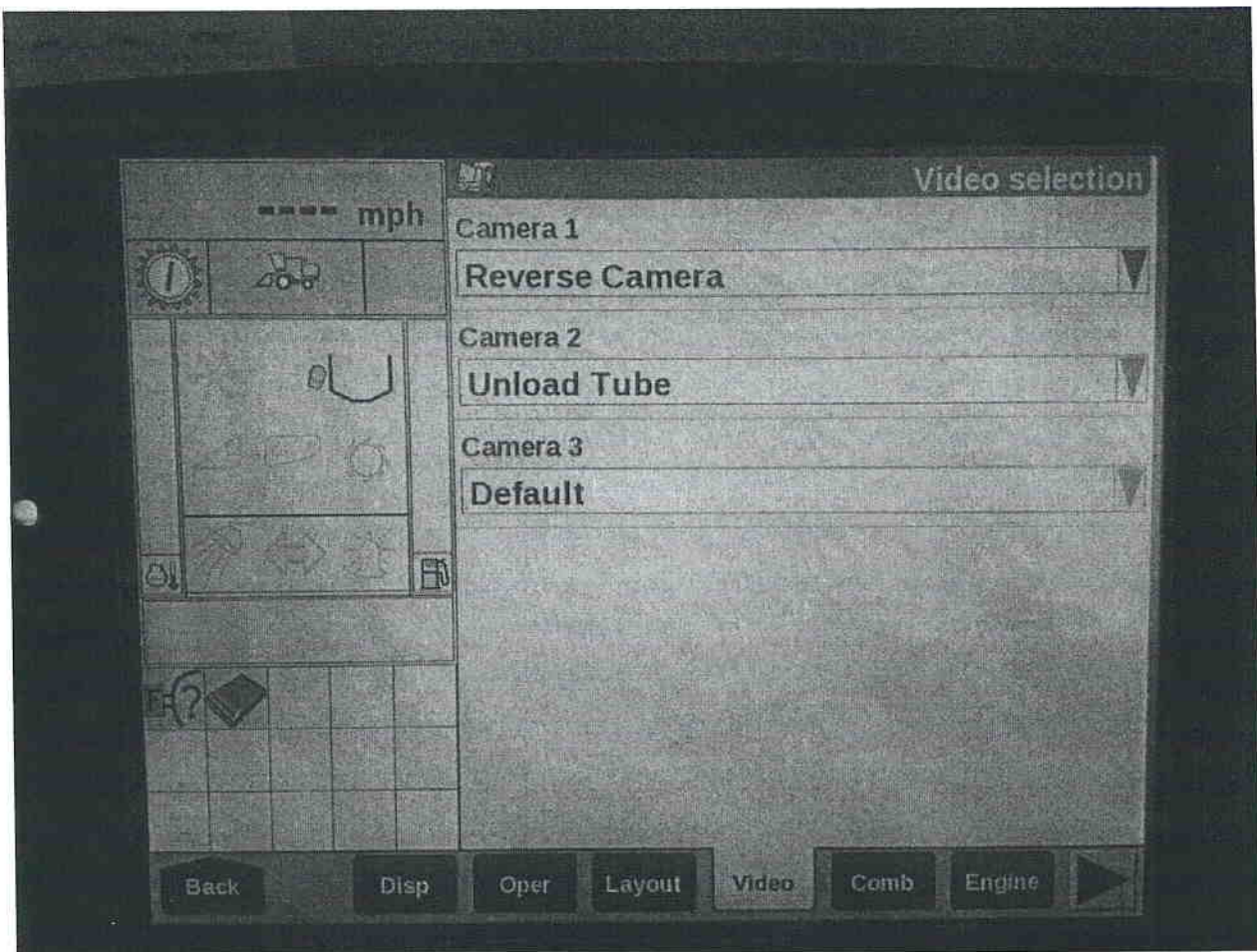
© 2011 CNH America LLC. All rights reserved. CNH and Case IH are registered trademarks of CNH America LLC. www.caseih.com PM-15497 06/2011



30 Series Flagship Combine Video Setup for Pro700 display

Pro700 displays can receive up to 3 video inputs. There is one BNC connector on the bottom of the display and there are two video inputs in the main 26 pin Amp Superseal connector. The display run screens can be configured to view any one of the three inputs. Touching the video window on the run screen will toggle between camera inputs. It is also possible to have each run screen viewing a different input.

Flagship combines with display software version **27.0.3.0 and higher** will have automatic camera switching based on propel handle position and unload auger engagement. To configure this system navigate to **TOOLBOX>VIDEO** and you will see:



Camera 1 input is the BNC connector on the bottom of the display.

Camera 2 input is Pin 8 of the main 26 pin connector

Camera 3 input is Pin 16 of the main 26 pin connector

If all three cameras are set to DEFAULT there is no automatic switching.

When you configure each input based on their location (reverse or unload tube) then when the propel handle is moved to the reverse slot ALL video screens will switch to the input configured as reverse camera. When the unload auger is switched on, ALL video screens will switch to the input configured as unload tube.

When either happens, the video screen will be over the top of whatever screen is currently being viewed. When the propel handle is moved from the reverse slot or the unload auger is switched OFF, the screen will revert back to what was being viewed prior.

What happens if we do both at the same time? First one wins!



AFS[®] Pro 700 Camera Adapter Installation Instructions

P/N - ZAE31200043

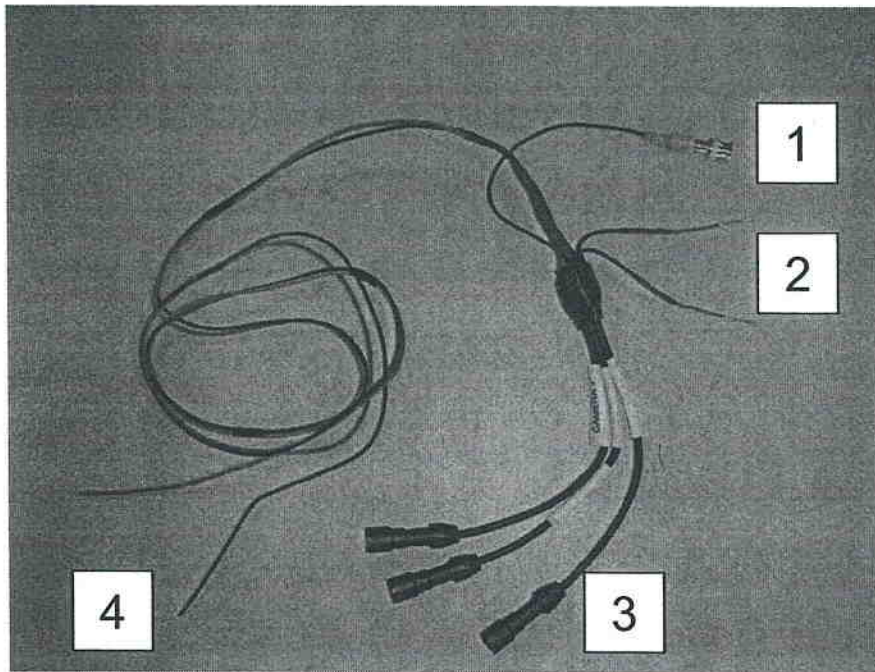
Table of Contents

Kit Contents.....	2
Display Component locations.....	3
Power Connections.....	4
BNC (camera 1) connection.....	5
26 pin (camera 2 & 3) connection.....	6
Video setup on Run screens.....	9

This kit contains the items to install the AFS Pro 700 camera Adapter harness.

These instructions contain information on how to properly install the camera adapter harness and use the video cameras. Carefully follow the recommended procedures for proper installation.

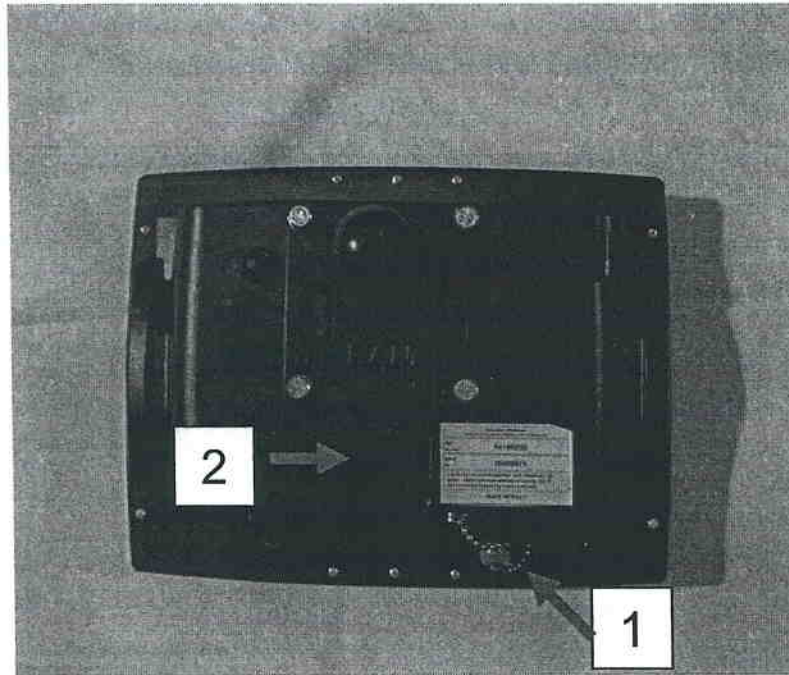
ZAE31200043 Kit Contents



AFS Pro 700 camera adapter harness

Item #	Description
1	BNC connector (Camera 1)
2	Terminal ends to be inserted in to 26 pin connector (camera 2 & 3)
3	Connections to cameras (cameras 1, 2, & 3)
4	Power/Ground wires (bare end wires)
5	Three Cable Ties (Not shown)

AFS Pro 700 component locations



Item #	Description
1	BNC connector (Camera 1)
2	26 pin connector (Cameras 2 & 3)

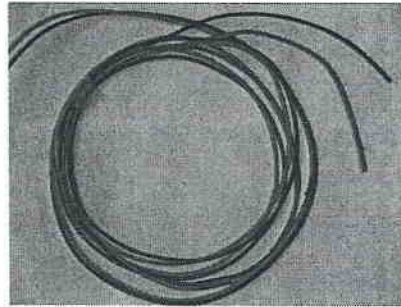
Instructions

Power connection

Note: +12V Power and Ground is required for camera operation.

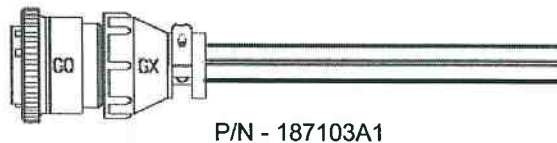
Step 1

Locate the power/ground leads.
The ends of the wires are bare ends, so a connector will need to be found locally to supply power.



A connector that could be used is the auxiliary power connector (P/N - 187103A1).

Terminal 1 (Red/Yellow)– Switched B+
Terminal 2 (Red) – Unswitched B+
Terminal 3 (Black) – Ground



Step 2

Locate a key switched power and ground source inside the cab.

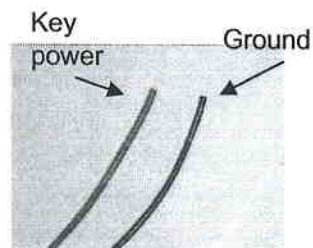
Note: If available, it is recommended to use the three pin power connection available in most cab configurations.



Step 3

Attach the **red wire** from the adapter harness to the key switched power source.

Attach the **black wire** from adapter harness to the ground source.



Camera 1 installation

Step 1

Locate the BNC Connector on the bottom of the display and remove the plug.



Step 2

Plug the BNC connector on the adapter harness into the BNC connector on the display



Step 3

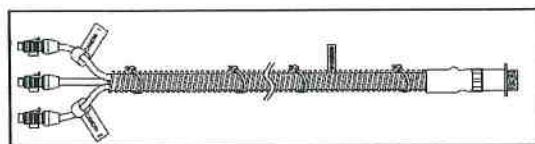
Route the camera extension harness into the cab and plug the connector into the "Camera 1" connection on the adapter harness.



The following extension cables are available if needed.

ZAECEC25HD – 25 ft Extension Cable
ZAECEC75HD – 75 ft Extension Cable

For applications that requires frequent hooking and unhooking of the camera extensions, the tractor connection point, a heavy-duty, bulk head connector harness is available. These harnesses have three camera connections and a single heavy duty bulk head connector.



ZAEBTC12L3HD – 12' Bulkhead connection w/ 3 camera connections (Tractor)

ZAEBTC25L3HD – 25' Bulkhead connection w/ 3 camera connections (Tractor)

ZAEBIC12LCHD – 12" Bulkhead connection w/ 3 camera connections (Implement)

Note: ZAEBIC12LCHD hooks together (at a bulkhead connector) with either ZAEBTC12L3HD or ZAEBTC25L3HD

Step 4

Position the video camera in the desired location and properly secure the extension harness(es) to prevent potential wire damage from any moving components.

Camera 2 & 3 installation

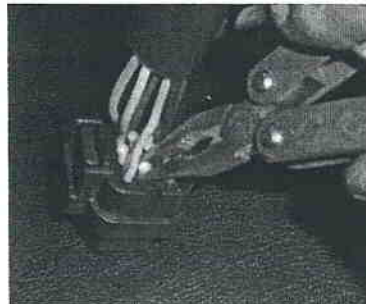
Step 1

Locate the male 26 pin connector body that will be plugged into the back of the display



Step 2

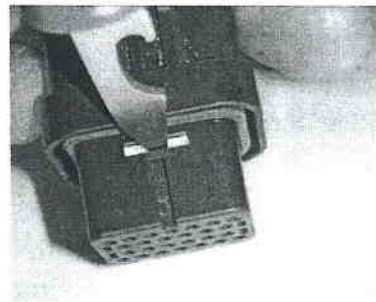
On the back of the connector, remove the white plugs in ports 8 and 16.



Step 3

Using a flat head screw driver push the white unlocking tab.

Note: The tab will only move 1-2 mm.



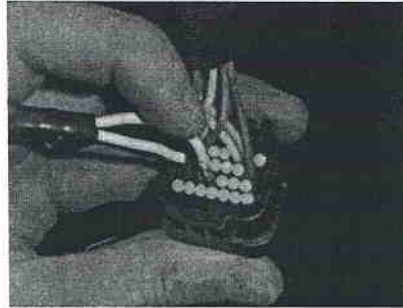
Step 4

Insert the terminal and wire that is labeled with "Camera 2" in to port 8. Push the terminal in until it stops. When the terminal is fully seated, the tip of the terminal should be visible from the opposite side of the connector.



Step 5

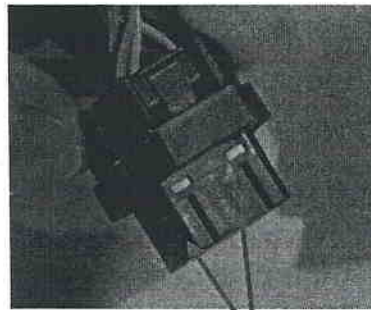
Insert the terminal and wire that is labeled with "Camera 3" in to port 16. Push the terminal in until it stops. When the terminal is fully seated, the tip of the terminal should be visible from the opposite side of the connector



Step 6

Making sure all of the terminals are pushed all the way in, push on the white tabs to lock the terminals in place.

If the tabs cannot be pushed, a terminal is not seated properly. Re-check that all terminals are pushed in and seated properly.

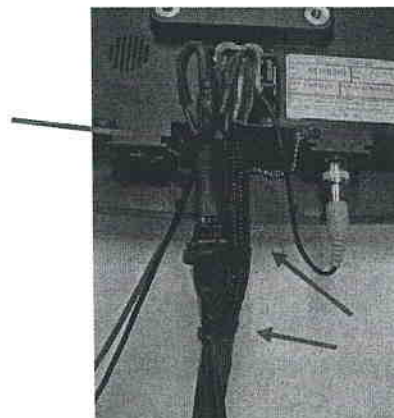


Step 7

Plug the 26 pin connector in the back of the display

Step 8

Secure the power and camera wires to the wire loom with the three supplied cable ties. Leave a small amount of slack in the wires to prevent damage.



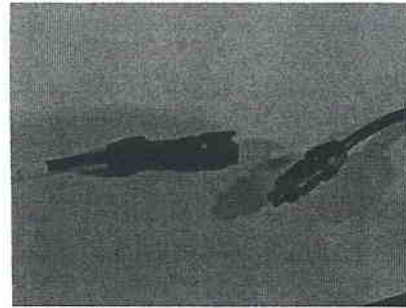
Step 9

Route the camera extension harnesses into the cab and plug them into the "Camera 2" and "Camera 3" connection on the adapter harness.

The following extension cables are available if needed.

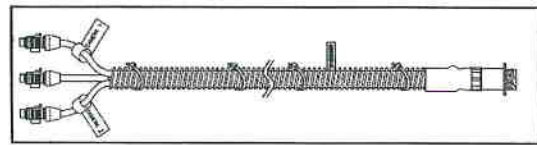
ZAECEC25HD – 25 ft Extension Cable

ZAECEC75HD – 75 ft Extension Cable



Note: These connectors will need to be unplugged any time the implement is unhooked.

For applications that require frequent hooking and unhooking of the camera extensions at the tractor connection point, a heavy-duty, bulk head connector harness is available. These harness have three camera connections and a single heavy duty bulk head connector.



ZAEBTC12L3HD – 12' Bulkhead connection w/ 3 camera connections (Tractor)

ZAEBTC25L3HD – 25' Bulkhead connection w/ 3 camera connections (Tractor)

ZAEBIC12LCHD – 12" Bulkhead connection w/ 3 camera connections (Implement)

Note: ZAEBIC12LCHD hooks together (at a bulkhead connector) with either ZAEBTC12L3HD or ZAEBTC25L3HD.

Step 10

Secure the adapter harness with cables ties to prevent any damage to harness.

Step 11

Position the video camera in the desired location and properly secure the extension harness to prevent any potential wire damage from any moving components.

Video Setup on Run screens or LH area

To view the video camera pictures, a video camera user defined window must be placed on a run screen. The user defined windows are available in the following sizes. 1x1, 1x2, 2x3, 2x4, and 2x5.

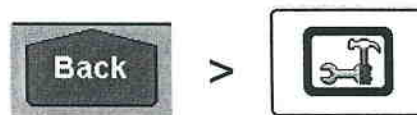
To place a video camera on the run screen perform the following steps.

Step 1

Turn the display on with the vehicle key switch

Step 2

After the display has powered on, select the Back button, then the Toolbox button



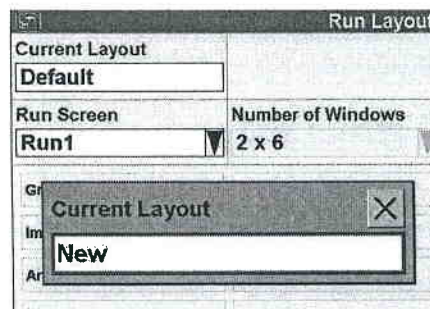
Step 3

Locate the Layout tab and select it.



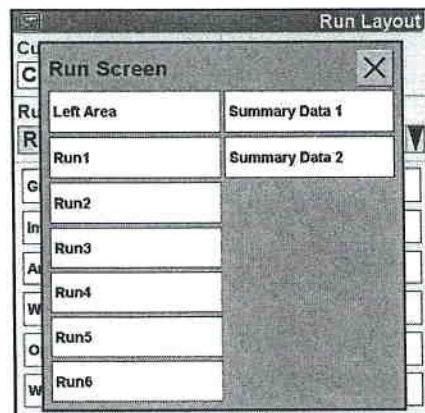
Step 4

Create a new layout, if one has not been created yet.



Step 5

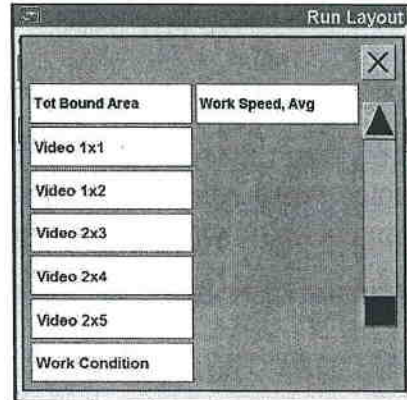
Choose the Run screen (or Left Area) where the video camera (s) would like to be viewed on.



Step 6

Choose the window in the given Run Screen or Left Area

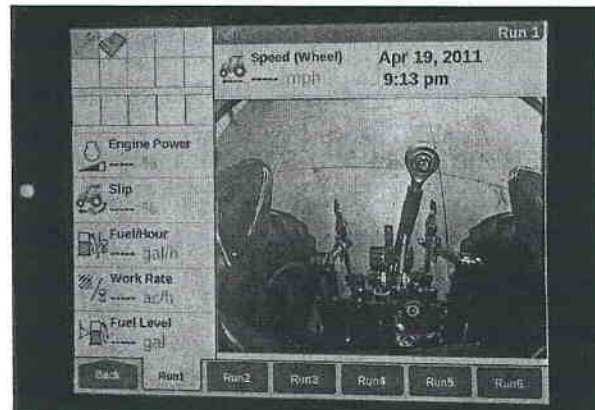
Note: Only one camera layout is viewable on each run screen.



Step 7

Navigate to the Run screen. The camera will be viewable on the run screen chosen in Step 6.

Note: Only one camera is viewable at a time. Touch the video picture on the display to cycle to the next camera input.



2x5 camera layout